

## TUMBLER RIDGE MUSEUM FOUNDATION COMMUNITY CENTRE EXHIBITS

At the invitation of the Tumbler Ridge Community Centre, the Tumbler Ridge Museum Foundation has been constructing exhibits since 2003. These fifteen varied displays complement the original display of **Tumbler Ridge hiking trail destinations (1)** in the lobby.

Admission is free, and the friendly reception staff at the Community Centre front desk is happy to answer your questions.

The **Main Cabinet Display Area (2)** contains locally found dinosaur footprints and information, as well as invertebrate and plant palaeontological specimens from the region. It also contains information and memorabilia on coal and the formation of Tumbler Ridge in the early 1980s. The largest artifact is a magnificent tree carving of a human face, from near Flatbed Creek. Above the main cabinet are the **Wonder of Water** text panels.

Nearby is the high-tech **Interactive Exhibit (3)**, which has over an hour of footage accessible by touching the screen and following easy menus. Topics include dinosaurs, human history, natural history, coal, the building of the BC rail line, and much more.

The **Wonders of Wapiti Lake Exhibit (4)** was donated by the Royal Tyrrell Museum of Palaeontology. It tells the story of the internationally renowned Fossil Fish lake area just south of Tumbler Ridge, which has yielded outstanding specimens of Triassic fishes and marine reptiles.

The **Outdoor Palaeontology Exhibit (5)** is viewed through closed glass doors. Most impressive is a large rock containing abundant cycad fossils.

The **2003 Cabinet Exhibit and Wall Display (6)** focuses on the palaeontological discoveries and initiatives of 2003. Nearby is a table top **model of Tumbler Ridge (7)** constructed during the housing sale of 2001.

The entire wall above the staircase is devoted to the **Monkman Exhibit (8)**, celebrating the remarkable history associated with the building of the Monkman

Pass Highway in the 1930s. This exhibit was formally opened in 2004 by the Lieutenant Governor of British Columbia, the Honourable Iona Campagnolo, who is the Honorary Patron of the Tumbler Ridge Museum Foundation.

Downstairs is the smaller **Leake Exhibit (9)**, featuring recently rediscovered late 1930s photographs taken by Reg Leake, the official photographer for the Monkman Pass Highway Association.

In the Library is a large **3D map** of the Tumbler Ridge area donated by Quintette Operating Corporation.

Extending the length of the corridor leading towards Rooms 4 and 5 is the **Tumbler Ridge Historic Map Exhibit (10)**. Opened early in 2005, this starts with the 1879 George Dawson map which shows the entire Tumbler Ridge area as “unexplored territory”. It then evolves through the recently discovered first maps ever made of the area in 1906, 1914 and 1927 exploration maps, 1919 and 1920 geological maps, and concludes with the most recent satellite photographs of the area and maps.

Room 5 is home to three photographic exhibits, in which original photos have been enlarged to 40” x 32” size and adorn the walls. The **Fay Exhibit (11)** deals with the first scientific expedition by the Samuel Prescott Fay party in 1914. The **Peck Exhibit (12)** has photos of the first family of pioneers to settle near what is now Tumbler Ridge (1914-1924), and the **Gray Exhibit (13)** has images from the 1927 Prentiss Gray hunting and photographic expedition through the region.

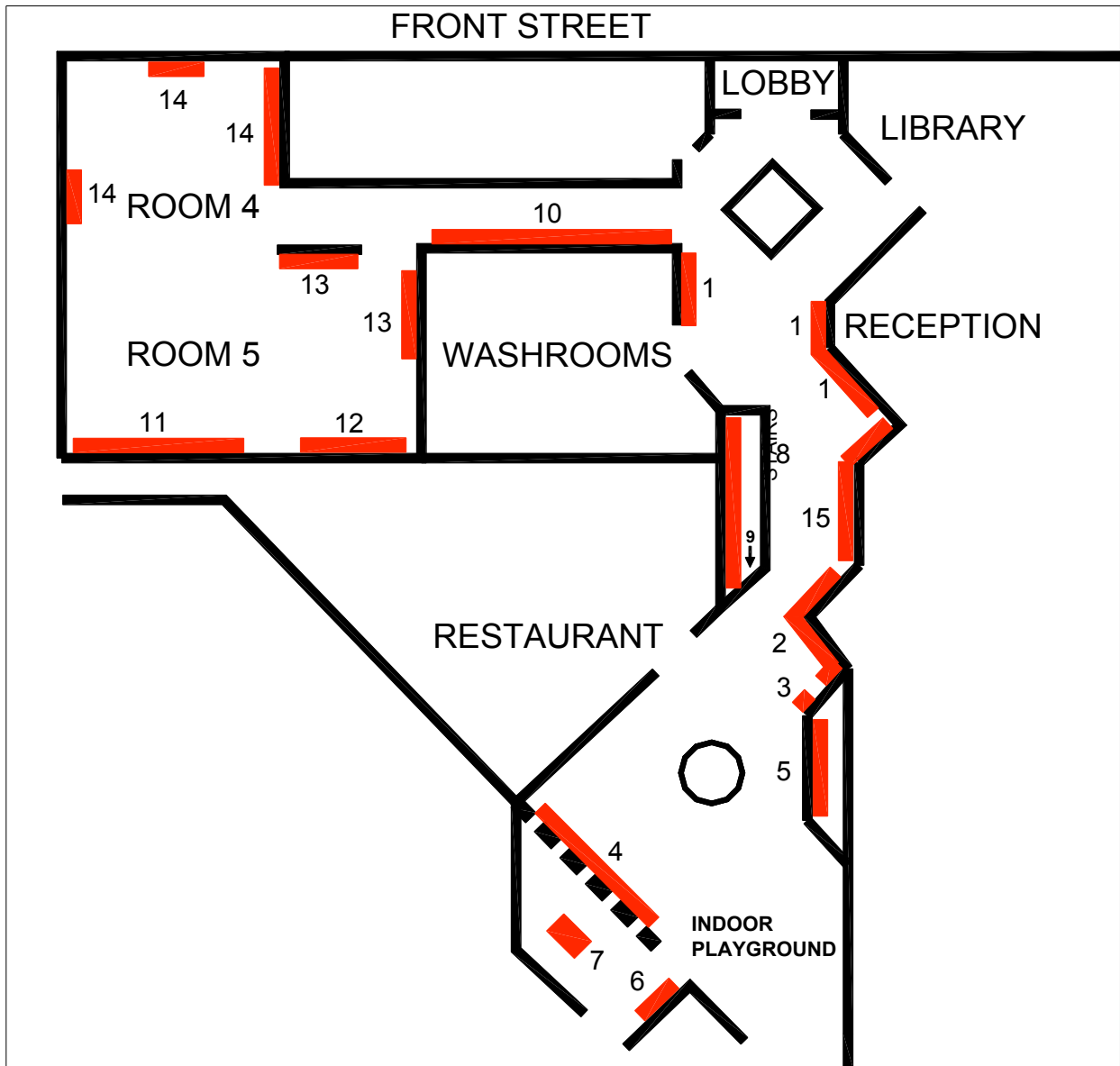
Room 4 houses the **Edwards-Terry Exhibit (14)**, telling a pictorial story of these hardy pioneers of the Wolverine valley.

If Rooms 4 and 5 are locked, please ask for the reception desk staff to open them.

The **Mining Exhibit (15)** depicts the first generation of coal mines, Quintette and Bullmoose, that opened up the area and led to the creation of the community of Tumbler Ridge.

# TUMBLER RIDGE MUSEUM FOUNDATION COMMUNITY CENTRE EXHIBITS





The Tumbler Ridge Museum Foundation's other initiative has been the creation of the **Peace Region Palaeontology Research Centre (PRPRC)**, the one of its kind in the province. It houses a major collections area and preparation laboratory, with resident palaeontologists, Rich McCrea and I Buckley.

In the spring of 2006 a new wing of the PRPRC, the **Dinosaur Discovery Gallery**, will be opened, and provide a year-round publicly accessible facility that celebrate the region's remarkable palaeontological discoveries.

In summer the Tumbler Ridge Museum Foundation offers dinosaur footprint tours to two of its field sites including unique nocturnal lantern tours. To book a tour please call 242-3123.

For more information on these projects and exhibits contact the Tumbler Ridge Museum Foundation, visit

[www.tumblerridgemuseum.com](http://www.tumblerridgemuseum.com)  
[www.prprc.com](http://www.prprc.com)

The Tumbler Ridge Museum Foundation wishes you a pleasant stay in Tumbler Ridge, and hopes you enjoy these exhibits.

Tumbler Ridge Museum Foundation member enquiries: 242-4611.

© 2005 Tumbler Ridge Museum Foundation